



EDEN MIDCALF
— SALES & LETTINGS —

OFFERS IN THE REGION OF

£525,000
Kingsford Lane

Kidderminster, DY11 5SL

PROPERTY SUMMARY

A very outwardly deceptive and beautifully improved three/four bedroom semi-detached dormer property enjoying a wonderful semi-rural setting in Wolverley, with stunning woodland views. Located close to historic Kinver village and renowned Kinver Edge, where delightful walks can be enjoyed, the property is "ready to move into" and offers an incredibly versatile layout, which is generously proportioned throughout. The property also includes a large driveway, with plenty of off-road parking, a garage, and an excellent sized and attractively landscaped rear garden, which benefits from a pleasant open rear aspect. EPC=E

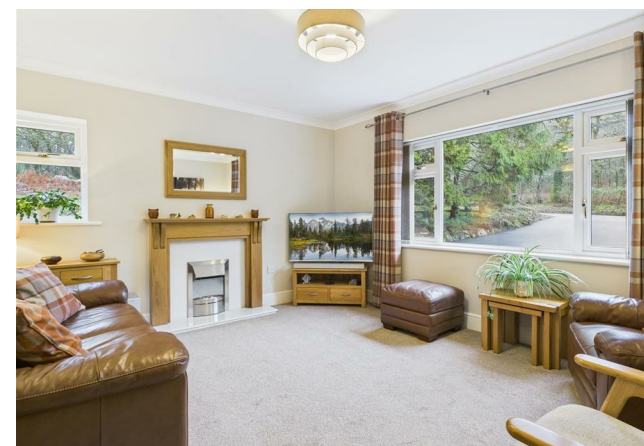
4



2



2







LOCAL AUTHORITY

TENURE

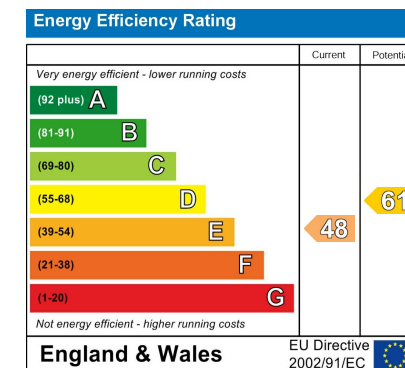
Freehold

COUNCIL TAX BAND

D

VIEWINGS

By prior appointment only



Agents Note: Whilst every care has been taken to prepare these particulars, they are for guidance purposes only. All measurements are approximate and are for general guidance purposes only and whilst every care has been taken to ensure their accuracy, they should not be relied upon and potential buyers/tenants are advised to recheck the measurements.

EDEN MIDCALF
SALES & LETTINGS

28 High Street
Kinver
DY7 6HF

01384 878000

<https://www.edenmidcalf.co.uk/us/>